

Months of the year



SECOND EDITION

© **Copyright 2023 Rwanda Basic Education Board**

All rights reserved.

All parts of this publication are protected by copyright.

Any utilization of this publication in terms of reproductions, translations, microfilming, and processing in electronic form outside the strict limits of the copyright law without the express permission of the Rwanda Basic Education Board, Republic of Rwanda, is forbidden and liable to prosecution.

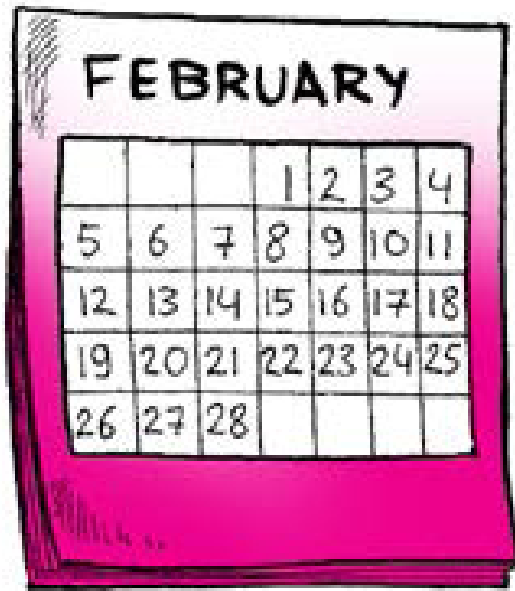
Disclaimer: The first edition was made possible with assistance from the American people sponsored by the US Agency for International Development (USAID). The second edition is made possible with assistance from The World Bank. The contents are the sole responsibility of Rwanda Basic Education Board and do not necessarily reflect the views of USAID or the US Government or The World Bank.

JANUARY						
1	2	3	4	5	6	7
8	9	10	11	12	13	14
15	16	17	18	19	20	21
22	23	24	25	26	27	28
29	30	31				



What is the first month?

January falls within the short dry season. It is locally known as “**Urugaryi**” Temperatures remain warm but comfortable. Rain becomes a little more infrequent.



What is the second month?

February is the second month. It is the shortest month of the year. It has 28 days. On a leap year, it has 29 days. This happens every four years.

MARCH						
			1	2	3	4
5	6	7	8	9	10	11
12	13	14	15	16	17	18
19	20	21	22	23	24	25
26	27	28	29	30	31	



What is the third month?

March is the third month.
March has 31 days. The
farmer takes the cow up
the hill.



What is the fourth month?

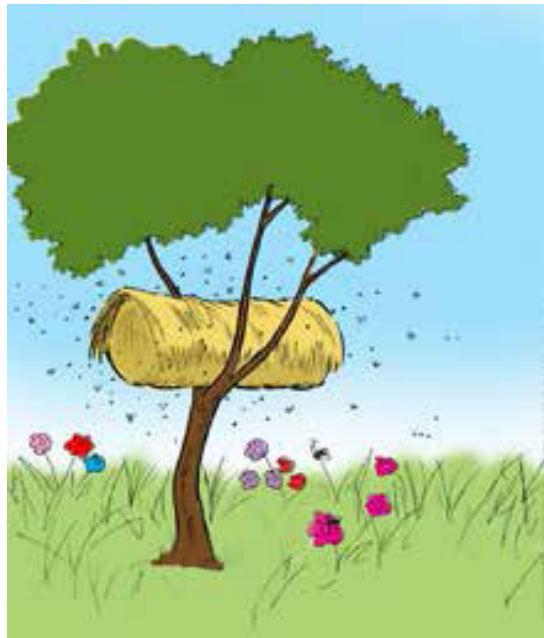
April is the fourth month. April has 30 days. April brings us cold rain showers. The rivers are wide and full of water.

MARCH						
1	2	3	4	5	6	7
8	9	10	11	12	13	14
15	16	17	18	19	20	21
22	23	24	25	26	27	28
29	30	31				

May						
1	2	3	4	5	6	7
8	9	10	11	12	13	14
15	16	17	18	19	20	21
22	23	24	25	26	27	28
29	30					



Late March, the long rains begin. Rainy season lasts from March to May. It is locally known as **“Itumba”**. It is characterized by a higher heavy precipitation in April.



What is the fifth month?

May is the fifth month. May has 31 days. The forest flowers bloom again. The bees move from flower to hive..



What is the sixth month?

June is the sixth month. June has 30 days. The sun begins to shine again. We feel the warm sunshine on our skin. We like to splash and swim.



What is the seventh month?

July is the seventh month. July has 31 days. Our school closes for holidays. We can run, jump, skip and play. We love holidays!



What is the eighth month?

August has 31 days. August is the warmest month of the year.

Cloudless skies are blue and clear. The grass is brown and dry.

JUNE						
1	2	3	4	5	6	7
8	9	10	11	12	13	14
15	16	17	18	19	20	21
22	23	24	25	26	27	28
29	30					

SEPTEMBER						
1	2	3	4	5	6	7
8	9	10	11	12	13	14
15	16	17	18	19	20	21
22	23	24	25	26	27	28
29	30					



From June to mid-September, it is the long dry season. It is characterized by high temperatures and low humidity.



What is the ninth month?

September is the ninth month.

September has 30 days. It's time to plant our crops again.

We plant beans, maize and potatoes.



What is the tenth month?

October is the tenth month.

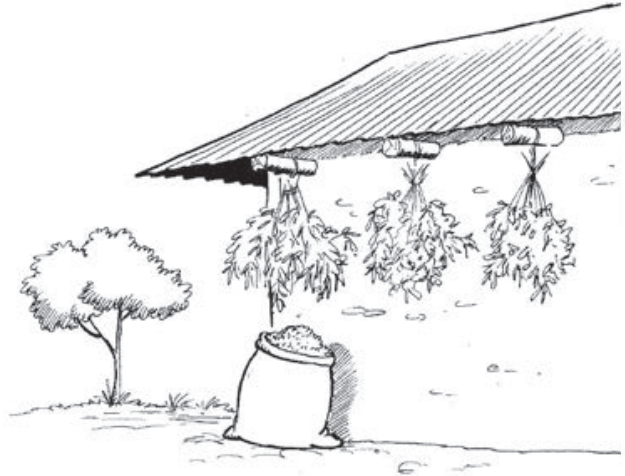
October has 31 days. In

October, our school year ends. In January, we will be in Primary 4.



What is the eleventh month?

November is the eleventh month. November has 30 days. We help our parents work in the fields. In our free time we like to read.



What is the twelfth month?

December is the twelfth month.

December has 31 days. It is the last month of the year. We harvest our food and we dry the beans.

October						
1	2	3	4	5	6	7
8	9	10	11	12	13	14
15	16	17	18	19	20	21
22	23	24	25	26	27	28
29	30	31				

November						
1	2	3	4	5	6	7
8	9	10	11	12	13	14
15	16	17	18	19	20	21
22	23	24	25	26	27	28
29	30					



The short rainy season starts from October to November. It is known as Umuhindo. It has heavy precipitation in November.

Comprehension questions

- 1) What is the first month of the year?
- 2) Which month of the year is the shortest?
- 3) What is the fourth month of the year?
- 4) How many months have 31 days?
- 5) How many days are in the month of June?

